



SHAKTI

PIPES



INTRODUCTION

SHAKTI IRRIGATION PVT. LTD. was established at Pithampur, Sector III, District Dhar, Madhya Pradesh. In the year 2014 as a subsidiary of the flagship company- **SHAKTI PUMPS (INDIA) LTD.** Which is renowned across the globe for its Stainless Steel Pumps & Motors. The company exports its products to over 120 countries. "**SHAKTI**" brand products are well received in the market as they are conforming to National & International standards coupled with superior quality and durability.

Backed by enormous agricultural knowledge and experience gained from their parent company -Shakti Pumps, **Shakti Irrigation (SHAKTI PIPES)** today is a globally acclaimed company engaged in the manufacture of PIPES used for various irrigation applications.

Shakti Irrigation Private Limited (SHAKTI PIPES) Plant set up at Pithampur in Madhya Pradesh (INDIA) represents the cutting-edge technology of the 21st century.

An ISO 9001: 2015 company, With a state-of-the-art integrated manufacturing unit have not only ensured the best quality but have also made **SHAKTI PIPES** a force to reckon with in the domestic as well as the international markets.

A leading provider of top-quality **PIPES**. As an industry expert, we understand the vital role that pipes play in ensuring the smooth flow of water.





SHAKTI PRODUCTS

uPVC COLUMN PIPES



CASING PIPES



RPVC PIPES



HDPE PIPES



SPRINKLER PIPES





uPVC COLUMN PIPES

FOR SUBMERSIBLE PUMPSET

APPLICATIONS

- Residential : Drainage & rainwater pipes for domestic use
- Industrial : For use in mining & chemical plants
- Agricultural : For irrigation of fields & plants
- Other : Swimming pool, sewage treatment & other public projects

BENEFITS

- Water rising for submersible and jet pump for irrigation, Domestic, Industrial mining, Chemical Distribution.
- A wise replacement for MA, PPR, ERW, GI, HDPE and SS Column Pipes.
- uPVC is nearly inert towards corrosion, Chemical reaction & erosion due to which, it is ideally used in salty, sandy and chemically aggressive water without any effect over the year.
- Installation vertical, Horizontal or Inclined.

RANGE

Outer Diameter : 33 mm to 165 mm
Available in Medium, Standard, Heavy & Super Heavy
Pressure Rating : 15 kg/cm² to 35 kg/cm²





uPVC COLUMN PIPES

SALIENT FEATURES

- ISO 9001-2015 certified
- Non-toxic in every way
- Suitable for depth up to 1200 ft
- Save electricity
- Available in the range of 1 Inch - 6 Inch
- Long lasting
- 25% more discharge as compared to galvanized pipes
- No chance of chemicals getting deposited
- Easy to carry, handle & install
- Very cost-effective

SUPERIOR DESIGN

- High quality finish that ensures unobstructed flow of water.
- Square threads ensure high tensile load capacity.
- Rubber gasket & spigot ends both inside & outside, ensure smooth joining as well as pressure sealing.
- Step ring prevents leakage, tremor & excess tightening to a great extent.
- Sealing ring on the inside ensures that all joints are leak proof, while also eliminating possibility of excess tightening to a great extent.
- Outer ring too, minimises joint leakage as well as excess tightening.
- Pipes are joined by means of coupler which remains locked due to inbuilt locking system.
- Thus, there is always a surety that neither the column pipe will slip & fall out nor the coupler will come out while fitting or removing the pump.
- There is 25% increased water flow due to smooth inside surface, as also ensuring 20% less electricity consumption.
- Clear & visible Shakti Hallmark eliminates any possibility of falling prey to spurious uPVC pipes.

PACKING DETAILS (Nos. of Pipes/ Bundle)

Size	3/2.9 Meter
1"	25
1.25"	20
1.5"	15
2"	10
2.25"	10
2.5"	8
3"	6
4"	4
5"	2
6"	2

Neno	2
	10

Medium	1"	1.25"	1.50"	2"	2.25"	2.50"	3"	4"	5"
	25	20	15	10	10	8	6	4	2

Standard	1"	1.25"	1.50"	2"	2.25"	2.50"	3"	4"	5"
	25	20	15	10	10	8	6	4	2

Heavy	1"	1.25"	1.50"	2"	2.25"	2.50"	3"	4"	5"	6"
	25	20	15	10	10	8	6	4	2	2

Super Heavy	1"	1.25"	1.50"	2"	2.25"	2.50"	3"	4"	5"
	25	25	20	10	10	8	6	4	2





uPVC COLUMN PIPES

SHORT COUPLER - TECHNICAL DETAILS



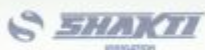
Type & Size OD- Outside Dia. NB- Nominal Bore	Ultimate Breaking Load (KG)	Safe Pulling Load with Chain Pulley (KG)	Safe Allowable Hydrostatic Pressure KG/ Cm ²	Safe Total Pump Delivery Head (mtr.)
OD 33 mm (1") ND: 25 mm				
Medium	900	500	15	130
Standard	1200	700	21	200
Heavy	1650	950	26	240



Type & Size OD- Outside Dia. NB- Nominal Bore	Ultimate Breaking Load (KG)	Safe Pulling Load with Chain Pulley (KG)	Safe Allowable Hydrostatic Pressure KG/ Cm ²	Safe Total Pump Delivery Head (mtr.)
OD 42 mm (1.25") ND: 32 mm				
Medium	1500	850	15	130
Standard	1700	1000	21	200
Heavy	2550	1500	26	250



Type & Size OD- Outside Dia. NB- Nominal Bore	Ultimate Breaking Load (KG)	Safe Pulling Load with Chain Pulley (KG)	Safe Allowable Hydrostatic Pressure KG/ Cm ²	Safe Total Pump Delivery Head (mtr.)
OD 48 mm (1.5") ND: 40 mm				
Medium	1900	1100	15	130
Standard	2850	1600	26	250
Heavy	4000	2300	35	350



1.5" (38mm) HD Heavy
Maximum Delivery Pressure 35 kg/cm²



1.5" (38mm) HD Heavy
Maximum Delivery Pressure 35 kg/cm²



uPVC COLUMN PIPES

LONG COUPLER - TECHNICAL DETAILS



Type & Size OD- Outside Dia. ND- Nominal Dia.	Ultimate Breaking Load (KG)	Safe Pulling Load with Chain Pulley (KG)	Safe Allowable Hydrostatic Pressure	Safe Total Pump Delivery
			KG/ Cm ²	Head (mtr.)
OD 60 mm (2") ND: 50 mm				
Nano	2000	1200	13	90
Medium	3150	1850	15	130
Standard	3600	2100	21	200
Heavy	4700	2800	27	270
Super Heavy	5650	3350	35	350



Type & Size OD- Outside Dia. ND- Nominal Dia.	Ultimate Breaking Load (KG)	Safe Pulling Load with Chain Pulley (KG)	Safe Allowable Hydrostatic Pressure	Safe Total Pump Delivery
			KG/ Cm ²	Head (mtr.)
OD 75 mm (2.5") ND: 65 mm				
Medium	3100	1800	13	100
Standard	4650	2700	18	160
Heavy	7000	4200	26	260
Super Heavy	9000	5300	35	350



Type & Size OD- Outside Dia. ND- Nominal Dia.	Ultimate Breaking Load (KG)	Safe Pulling Load with Chain Pulley (KG)	Safe Allowable Hydrostatic Pressure	Safe Total Pump Delivery
			KG/ Cm ²	Head (mtr.)
OD 88 mm (3") ND: 80 mm				
Medium	4450	2600	11	110
Standard	6800	4000	18	170
Standard Plus	7800	4600	21	200
Heavy	9600	5650	26	260
Super Heavy	12400	7300	35	350





uPVC COLUMN PIPES

LONG COUPLER

- TECHNICAL DETAILS



Type & Size OD- Outside Dia. ND- Nominal Dia.	Ultimate Breaking Load (KG)	Safe Pulling Load with Chain Pulley (KG)	Safe Allowable Hydrostatic Pressure	Safe Total Pump Delivery
			KG/ Cm ²	Head (mtr.)
OD 113 mm (4") ND: 100 mm				
Medium	6800	4000	10	100
Standard	10000	5900	16	150
Standard Plus	11500	6000	21	200
Heavy	15900	9350	26	250
Super Heavy	20600	12150	35	350



Type & Size OD- Outside Dia. ND- Nominal Dia.	Ultimate Breaking Load (KG)	Safe Pulling Load with Chain Pulley (KG)	Safe Allowable Hydrostatic Pressure	Safe Total Pump Delivery
			KG/ Cm ²	Head (mtr.)
OD 140 mm (5") ND: 125 mm				
Medium	12200	7750	10	130
Standard	16400	9650	16	160
Heavy	24000	14600	26	230
Super Heavy	30500	18600	35	350



Type & Size OD- Outside Dia. ND- Nominal Dia.	Ultimate Breaking Load (KG)	Safe Pulling Load with Chain Pulley (KG)	Safe Allowable Hydrostatic Pressure	Safe Total Pump Delivery
			KG/ Cm ²	Head (mtr.)
OD 165 mm (6") ND: 150 mm				
Heavy	40000	23500	26	260





uPVC COLUMN PIPES

QUALITY CONTROL PROCEDURES

The pipes and couplers manufactured at Shakti, follow a stringent quality control process in order to supply a defect free system to its users.

Test	Standard
Short Term Hydrostatic Pressure Test	As per IS 4985-1988
Impact Strength	As per IS 4985-2021 Testing done at 6 to 20 times higher than specifications
Tensile Strength	As per IS 12818-1992
Joint Pressure Test	As per IS 12235-2004 Should be one or two times of working pressure (depending on size)
Specific Gravity	As per IS 12818-1992 Between 1.40 - 1.43

INSTALLATION GUIDE

Step 1:

Join the metal connector with submersible pump with the help of a chain wrench.

Step 2:

Before joining the pipes, ensure to clean the threads with clean water.

Step 3:

Before joining the pipes, ensure that the pump guard is installed properly.

Step 4:

Before opening or joining the pipe/adaptor ensure to hold the coupling by hand.

Step 5a/5b:

Tighten pipe with hand till half rubber ring is seen. Finally if required, give a last jerk with rope or felt wrench.

Step 6:

At the time of lowering Shakti pipes, place the clamp below the coupler. Clamp the top adaptor with the last pipe.

Step 7:

Lower the pipes with the help of chain pully.



2.5" (63.5mm) HDPE
MAXIMUM DELIVERY PRESSURE 25 kg/cm²

2.5" (63.5mm) HDPE
MAXIMUM DELIVERY PRESSURE 25 kg/cm²



uPVC COLUMN PIPES

ADAPTER

SS TOP ADAPTER



SS BOTTOM ADAPTER



CI TOP ADAPTER



CI BOTTOM ADAPTER



Available in all sizes from 1 Inch to 6 Inch Column Pipes

 **SHAKTI**
INDIA

2.5" (63.5mm) HDPE
MAXIMUM DELIVERY PRESSURE 28 kg/cm²

 **SHAKTI**
INDIA

2.5" (63.5mm) HDPE
MAXIMUM DELIVERY PRESSURE 28 kg/cm²



BELL END COLUMN PIPES (PVC)

APPLICATIONS

- Bell end pipe is used for piping System
- Pipe for lower pressure water flow applications
- Pipe can handle 140 degrees F in Temp
- Pipe are belled end so no coupling is needed for installation
- Handle low Pressure But has Great Chemical Resistance

SALIENT FEATURES

- Non-toxic in every way
- Suitable for depth up to 100 ft to 125 ft
- Available in the range of 1" - 2"
- Easy to carry, handle & install
- Very cost-effective
- High quality finish that ensures unobstructed flow of water.
- NPT threads ensure high tensile load capacity.
- Clear & visible Shakti Hallmark eliminates any possibility of falling prey to spurious PVC pipes.

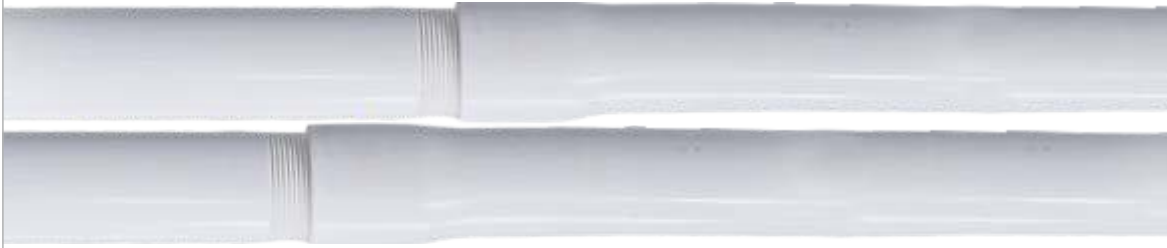
RANGE

SIZE	TYPE	PRESSURE (KG)	OD (MM)		END THICKNESS (MM)		BARREL THICKNESS (MM)	
1"	MEDIUM	15	32.60	33.20	4.00	4.60	2.00	2.30
1.25"	MEDIUM	15	41.50	42.10	4.50	5.00	2.20	2.40
1.5"	MEDIUM	15	47.50	48.10	4.80	5.30	2.90	3.20
2"	MEDIUM	15	59.50	60.10	5.00	5.50	2.90	3.30

PACKING DETAILS (No's. of Pipes/ Bundle)

Size	3/2.9 Meter	6/5.8 Meter
1"	25	25
1.25"	20	20
1.5"	15	15
2"	10	10

* NPT Thread





uPVC COLUMN PIPES (SS SOCKET)

APPLICATIONS

- Bell end pipe is used for piping System
- Pipe for lower pressure water flow applications
- Pipe can handle 140 degrees F in Temp
- Pipe are belled end so no coupling is needed for installation
- Handle low Pressure But has Great Chemical Resistance

SALIENT FEATURES

- Non-toxic in every way
- Suitable for depth up to 100 ft to 125 ft
- Available in the range of 1.25" - 2"
- Easy to carry, handle & install
- Very cost-effective
- High quality finish that ensures unobstructed flow of water.
- NPT threads ensure high tensile load capacity.
- Clear & visible Shakti Hallmark eliminates any possibility of falling prey to spurious PVC pipes.



RANGE

MATERIAL CODE	MATERIAL DISCRIPTION
9000025301	COLUMN PIPE- 32MM (1.25") MED. 15 KG
9000025305	COLUMN PIPE- 40MM (1.50") MED. 15 KG
9000025097	COLUMN PIPE- 50MM (2") MED. 15 KG

PACKING DETAILS (No's. of Pipes/ Bundle)

Size	3/2.9 Meter	6/5.8 Meter
1.25"	20	20
1.5"	15	15
2"	10	10

* NPT Thread





CASING PIPE

APPLICATIONS

- Bore-well Casing, Irrigation, Domestic, Industrial mining, Chemical distribution.
- A wise replacement for MS, ERW, GI, Asbestos and Cement and SS Pipes.
- uPVC is nearly inert towards corrosion, chemical reaction and due to which, it is ideally used in salty, sandy and chemically aggressive water without any effect over the years.

SPECIFICATION

- Maximum installation depth 250m for CM series, and 80m for CS series.
- Installation: Vertical, Horizontal or Inclined

SALIENT FEATURES

- Easy to Handle
- Corrosion Free
- Maximum Yield of Water
- Easy Joining & Installation
- Fire Proof
- Long Life
- Very high collapsible resistance
- Ultimate Tensile Strength and Impact Strength



SPECIAL FEATURES & IDENTITY

- Specification followed IS 12818:2010 equivalent to DIN 4925.
- Trapezoidal threaded socket & spigot ends for easy, reliable jointing, long and better strength.
- Surface finish of this pipe is extremely smooth which reduces the hydraulic friction.
- Ribbed screen pipes are used especially when outer surface area of bore-well casing pipe is to be increased. These ribs provide around 25% of additional surface area by virtue of its design. Besides that if hole gravel balls away from the pipe at a distance of about 2 mm.
- This arrangement naturally cleans slits due to vertical flow passage and allows more water to seep in, resulting in higher yield than other plain screen pipes from same bore
- Horizontal Slots to get maximum water yield.

RANGE

Outer Diameter : 110 mm to 225 mm
Colour : Blue & Gray
Available : Threading & Solvent joint





uPVC CASING PIPES

CS (Shallow Well Casing) Suitable for well depth up to 80 Meter

Nominal Diameter		Mean Outer Diameter		Wall Thickness		Mean Outer Dia Over Ovier	Length of Threads
mm	Inch	Min	Max	Min	Max		
125	5.0"	140.00	140.40	5.30	5.60	148.00	63
150	6.0"	165.00	165.40	5.70	6.50	174.00	63
165	6.5"	180.00	180.30	6.10	7.10	188.00	63
175	7.0"	200.00	200.50	7.00	7.80	211.00	63
200	8.0"	225.00	225.50	7.60	8.80	238.00	74
225	9.0"	250.00	250.50	8.80	9.60	262.00	74
250	10.0"	280.00	280.50	9.60	11.00	292.00	90
300	12.0"	330.00	330.60	11.20	13.30	346.00	90

CM (Medium Well Casing) Suitable for well depth up to 250 Meter

Nominal Diameter		Mean Outer Diameter		Wall Thickness		Mean Outer Dia Over Ovier	Length of Threads
mm	Inch	Min	Max	Min	Max		
40	1.5"	48.00	48.20	3.50	4.00	52.00	25
50	2.0"	60.00	60.20	4.00	4.60	65.00	30
80	3.0"	88.00	88.30	4.00	4.60	94.00	40
100	4.0"	113.00	113.30	5.00	5.70	120.00	48
115	4.5"	125.00	125.30	5.00	5.70	132.00	48
125	5.0"	140.00	140.40	6.50	7.30	150.00	63
150	6.0"	165.00	165.40	7.50	8.50	178.00	63
165	6.5"	180.00	180.40	10.00	10.80	196.70	63
175	7.0"	200.00	200.50	8.80	9.80	215.00	63
200	8.0"	225.00	225.50	10.00	11.20	243.00	74
225	9.0"	250.00	250.50	12.00	12.50	270.00	74
250	10.0"	280.00	280.50	12.50	14.00	298.00	90
300	12.0"	330.00	330.60	14.50	16.20	352.00	90





uPVC CASING PIPES

CD (Casing Well Depth) Suitable for well depth up to 450 Meter

Nominal Diameter		Mean Outer Diameter		Wall Thickness		Mean Outer Dia Over Over	Length of Threads
mm	Inch	Min	Max	Min	Max		
100	4.0"	113.00	113.30	7.00	7.90	125.00	48
115	4.5"	125.00	125.30	7.50	8.50	137.00	48
125	5.0"	140.00	140.40	8.00	9.00	152.00	63
150	6.0"	165.00	165.40	9.50	10.70	180.00	63
175	7.0"	200.00	200.50	11.80	13.60	217.00	63
200	8.0"	225.00	225.50	13.00	14.80	247.00	74
250	10.0"	280.00	280.50	16.00	17.60	304.00	90
300	12.0"	330.00	330.60	19.00	21.00	359.00	90





PVC RIGID PIPE

SALIENT FEATURES

- Specification followed : IS : 4985:2021
- Lightweight, easy to transport & install
- Strong, flexible & durable
- High electrical resistance, low thermal conductivity & extremely hygienic
- Saves energy due to smooth inner surface which enables better discharge
- Resistant to chemicals
- Termite proof & UV resistant
- Leak proof
- Negligible algae formation due to low opacity
- Resistant to moisture abrasion & wearing

APPLICATIONS

Agriculture:

- For irrigation purpose in agriculture

Industrial:

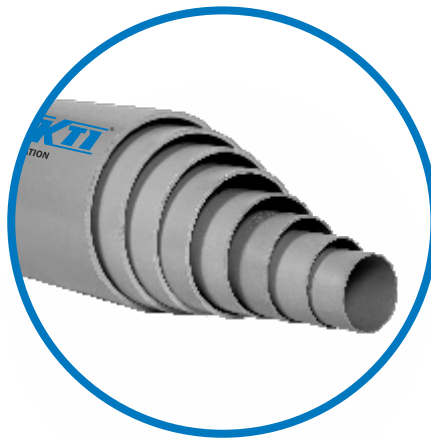
- Disposal of chemical effluent & waste
- Acid & slurries transportation
- Salt water handling

Domestic:

- Potable water supply in urban areas

Others:

- Telecommunication cable ducting



RANGE

Outer Diameter / Pressure Rating

90mm to 315 mm OD in 2.5 kgf/cm²

63mm to 315 mm OD in 4.0 kgf/cm²

40mm to 315 mm OD in 6.0 kgf/cm²

20mm to 315 mm OD in 10.0 kgf/cm²





HDPE PIPE

FEATURES

- Excellent corrosion and chemical resistance.
- Inert to most acidic and alkaline solutions.
- High flow characteristics.
- Light weight.
- Easy to handle & transport.
- Excellent flexibility combined with strength.
- Good abrasion resistance.
- Smooth inner walls minimises frictional losses.
- Safe for potable water supply.



LENGTH & PACKING

Size Range (MM)	Coil Length (Mtr.)
20-50	100, 200, 500, 1000
63-75	100,200
90-110	50, 100 Straight Length of 6-12 Mtr.
125-500	Straight Length of 6-12 Mtr.

RANGE

Outer Diameter : 25 mm to 500 mm
 Grade : PE63, PE80 & PE100
 Pressure Rating : PN4, PN6, PN8,
 PN10, PN12.5 & PN 16

STANDARD APPLICATION

Application	Grade	Applicable Standard
Potable water mains, house connections	PE 63, PE 80 and PE 100	IS:4984:2016, ISO:4427, DIN 8074/75, AS/NZS 4130
Rural and agricultural pipes	PE 63 and PE 80	IS:17425:2020
HDPE pipes for submersible pumps in coil form	PE 63 and PE 80	IS:4984:2016
Sewerage/Subsoil drainage	PE 80 and PE 100	IS:4984:2016
Coal handling in mines	PE 80 and PE 100	IS:4984:2016
Industrial applications	PE 63, PE 80 and PE 100	IS:4984:2016
ID Pipes for submersible pump	PE 63 and PE 80	Company Standard





SPRINKLER PIPE

APPLICATIONS

Agriculture

- Efficient use of water, fertilizers
- Safety of crops and reduction of soil erosion.

Industrial

- Checking of dust pollution in cement Industries and mining pits.

Other

- Playground and golf course maintenance.
- Land decor and beautification
- Field Irrigation.

FEATURES

- Strong, durable & leak proof
- Light weight and flexible
- Energy saving
- Inert to chemical, corrosion,
- Environmental stress
- Safe - UV stabilizer for protection from
- Sunlight & avoid degradation of materials
- High Quality Grade Pipe & Fittings
- Water Saving
- Long Lasting & Maintenance Free

RANGE

Outer Diameter : 63 mm to 110 mm
Pressure Rating : 2.5, 3.2, 4 & 6 kg/cm²



UNDER THE FLAGSHIP COMPANY SHAKTI PUMPS (INDIA) LIMITED



SHAKTI IRRIGATION PRIVATE LIMITED

Plot No. 659 to 735, Sector - 3, Pithampur - 454774, Dist.- Dhar (M.P.) - India
Telephone No. 07292-410500, Email: atul@shaktiirrigation.com, export@shaktiirrigation.com
Web: www.shaktipipes.com & www.shaktiirrigation.com